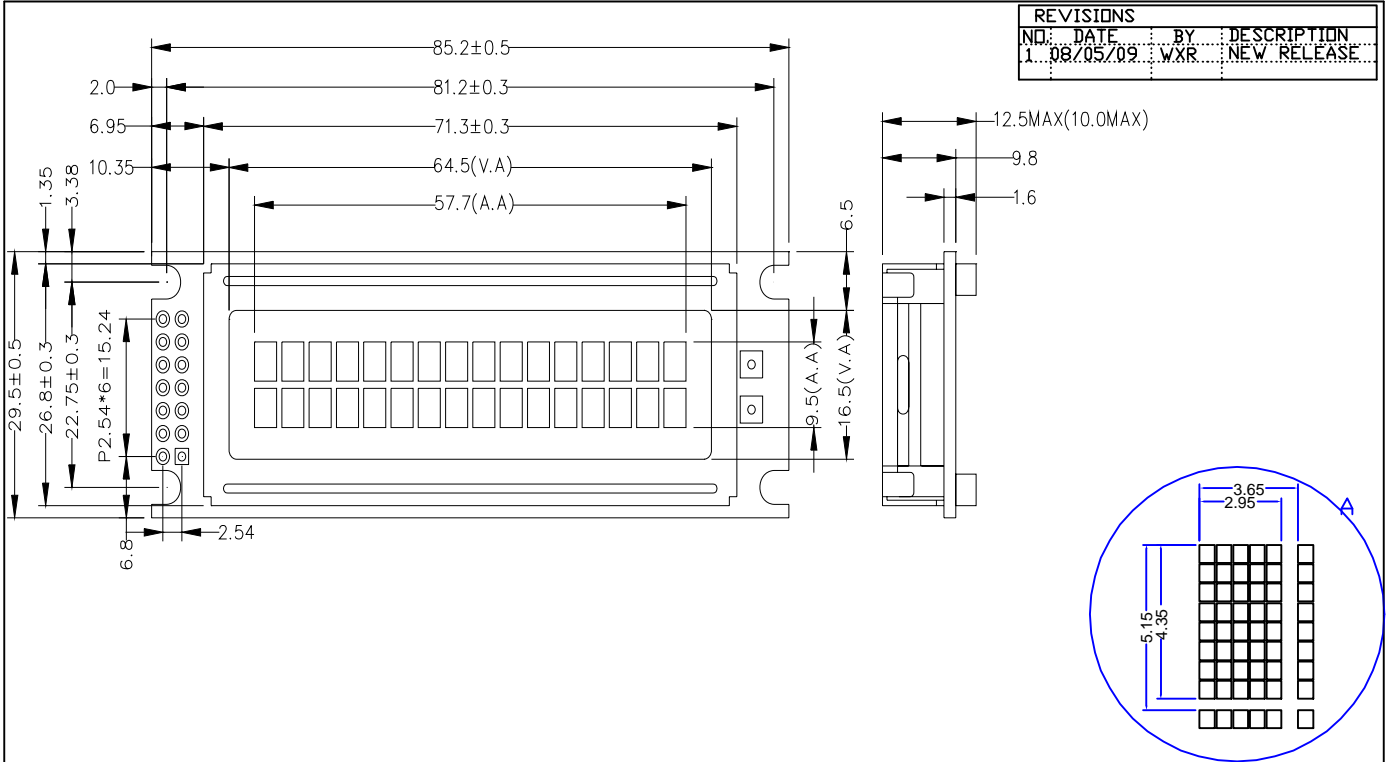


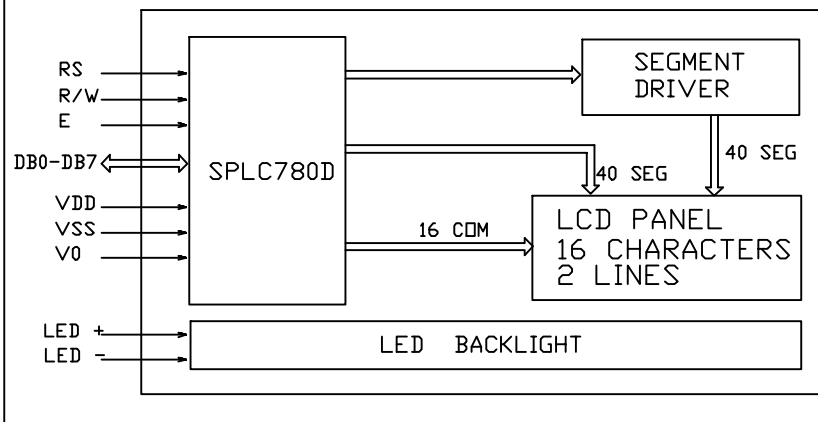
CUSTOMER'S APPROVED:

DATE:

REVISIONS			
NO.	DATE	BY	DESCRIPTION
1.	08/05/09	WXR	NEW RELEASE



Block Diagram



Feature

- BUILT IN CONTROLLER: SPLC780D
- POWER SUPPLY: 5.0V
- LCD TYPE: Y-G STN, TRANSFLECTIVE
- BACKLIGHT: LED BOTTOM BACKLIGHT
- COLOUR OF BACKLIGHT: Y-G
- 5X8 DOTS WITH CURSOR
- VIEWING ANGLE: 6 O'CLOCK
- TEMP RANGE: Top: -20--70C; Tst: -30--80C
- LOW CONSUMPTION, LOW VOLTAGE, HIGH CONTRAST

Mechanical Data

ITEM	SPECIFICATION	UNIT
OVERALL SIZE	85.2W x 29.5H x 12.5T	MM
VIEWING AREA	64.5W x 16.5H	MM
DOT NUMBER	16 CHARACTERS X 2 LINES	DOTS
DOT SIZE	2.95W x 4.35H	MM
DOT PITCH	3.65W x 5.15H	MM

Pin Assignment

NO.	SYMBOL	DESCRIPTION
1	VDD	POWER SUPPLY FOR LOGIC(5.0V)
2	VSS	GROUND FOR LOGIC(0V)
3	V0	OPERATING VOLTAGE FOR LCD
4	RS	DATA/INSTRUCTION SELECT
5	R/W	READ/WRITE CONTROL
6	E	ENABLE SIGNAL
7--14	DB0--DB7	DATA BUS
15	A	LED BACKLIGHT POWER SUPPLY(+)
16	K	LED BACKLIGHT POWER SUPPLY(-)

Absolute Maximum Rating

ITEM	SYMBOL	MIN	MAX	UNIT
POWER SUPPLY(LOGIC)	VDD-VSS	0	6.5	V
POWER SUPPLY(LCD DRV.)	VDD-V0	-	-	V
INPUT VOLTAGE	VI	VI	VDD	V

Electrical Characteristics

ITEM	SYMBOL	MIN	TYP	MAX	UNIT
VOLTAGE FOR LOGIC	VDD-VSS	4.5	5.0	5.5	V
SUPPLY CURRENT	IDD	-	2.0	3.0	mA
LCD OPERATING VOLTAGE	VDD-V0	0C	-	5.0	V
		25C	-	4.7	V
		40C	-	4.4	V
INPUT VOLTAGE	H	0.7VDD	-	VDD	V
	L	0	-	0.3VDD	V

DESCRIPTION: C/D	Distar Technology Limited	
GENERAL TOL: ±0.2	www.distarltd.com	Drw XGH
DO NOT SCALE THIS DRAWING.		Unit: mm
		Chk Apv

DS-C1602H-YFSDYE-NAA