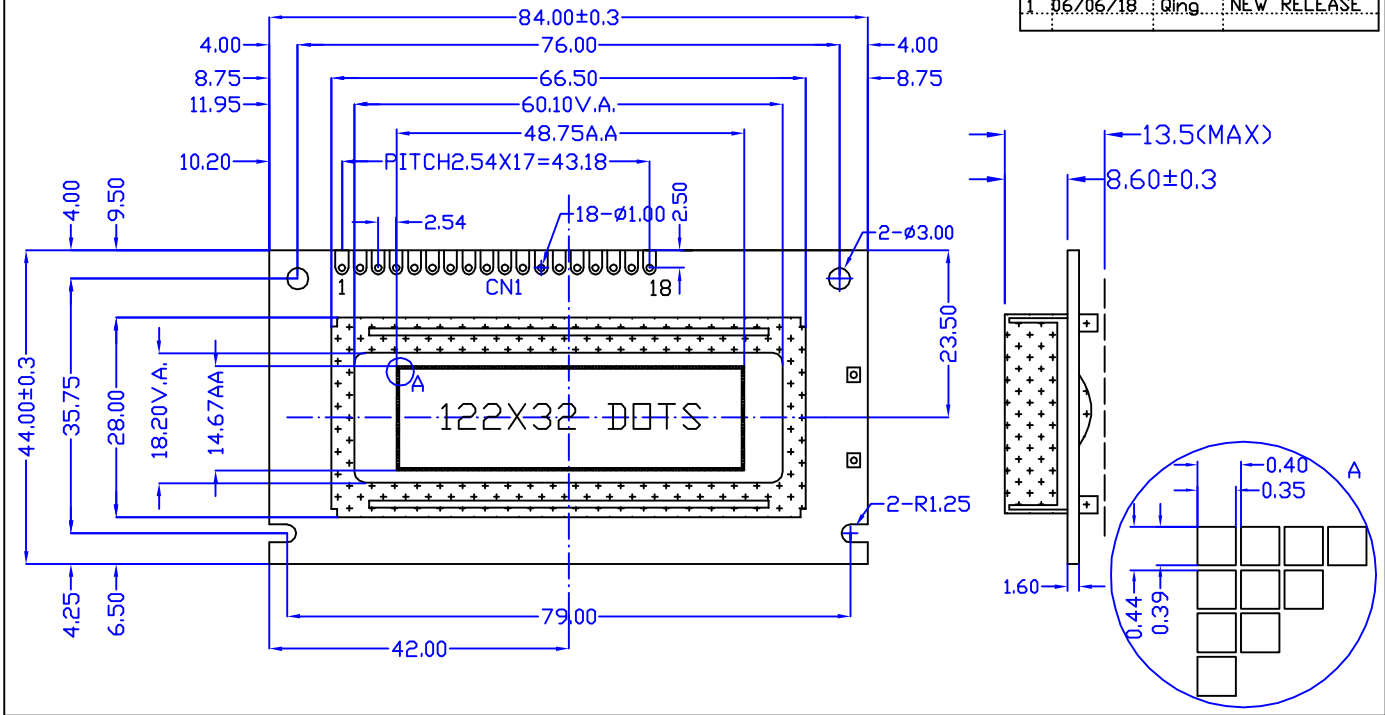


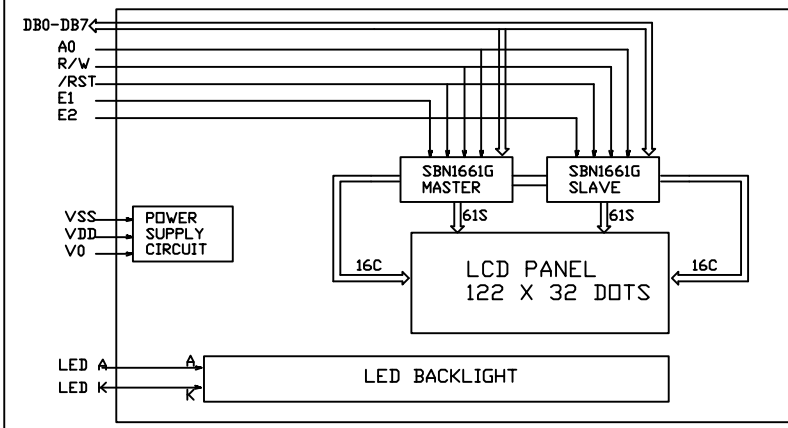
CUSTOMER'S APPROVED:

DATE:

REVISIONS			
NO.	DATE	BY	DESCRIPTION
1.	06/06/18	Qing	NEW RELEASE



Block Diagram



Feature

1. BUILT IN CONTROLLER: SBN1661G
2. POWER SUPPLY: 5.0V
3. LCD TYPE: BLUE STN, TRANSMISSIVE
4. BACKLIGHT: LED SIDE BACKLIGHT
5. COLOUR OF BACKLIGHT: WHITE
6. 1/32 DUTY CYCLE, 1/7 BIAS
7. VIEWING ANGLE: 6 O'CLOCK
8. TEMPERATURE RANGE: EXTENDED (-20--70)
9. LOW CONSUMPTION, LOW VOLTAGE, HIGH CONTRAST

Mechanical Data

ITEM	SPECIFICATION	UNIT
OVERALL SIZE	84.0W x 44.0H x 13.5T	MM
VIEWING AREA	60.1W x 18.2H	MM
DOT NUMBER	122 x 32	DOTS
DOT SIZE	0.35W x 0.39H	MM
DOT PITCH	0.40W x 0.44H	MM

Pin Assignment

NO.	SYMBOL	DESCRIPTION
1	VDD	POWER SUPPLY FOR LOGIC AND LCD
2	VSS	GROUND
3	VR	OPERATING VOLTAGE FOR LCD
4	/RST	RESET SIGNAL (LOW EFFECTIVE)
5	E1	READ/WRITE ENABLE SIGNAL (MASTER)
6	E2	READ/WRITE ENABLE SIGNAL (SLAVE)
7	R/W	READ/WRITE SELECT
8	A0	DATA/INSTRUCTION SELECT
9--16	DB0--DB7	DATA BUS
17	A	LED BACKLIGHT POWER SUPPLY(+)
18	K	LED BACKLIGHT POWER SUPPLY(-)

Absolute Maximum Rating

ITEM	SYMBOL	MIN	MAX	UNIT
POWER SUPPLY (LOGIC)	VDD-VSS	0	6.5	V
POWER SUPPLY (LCD DRV.)	VDD-V0	0	13.0	V
INPUT VOLTAGE	VI	VI	VDD	V

Electrical Characteristics

ITEM	SYMBOL	MIN	TYP	MAX	UNIT
VOLTAGE FOR LOGIC	VDD-VSS	4.75	5.0	5.25	V
SUPPLY CURRENT	IDD	-	12.0	-	mA
LCD OPERATING VOLTAGE	VDD-V0	0C	-	5.3	V
		25C	-	4.8	V
		40C	-	4.3	V
INPUT VOLTAGE	H	VIH	0.7VDD	-	VDD
	L	VIL	0	-	0.3VDD

DESCRIPTION: C/D	Distar Technology Limited	
GENERAL TOL: ±0.2	www.distarltd.com	Drw WXY
DO NOT SCALE THIS DRAWING.	Unit:mm	Chk Apv

DS-G12232E-BTSSWE-NAA