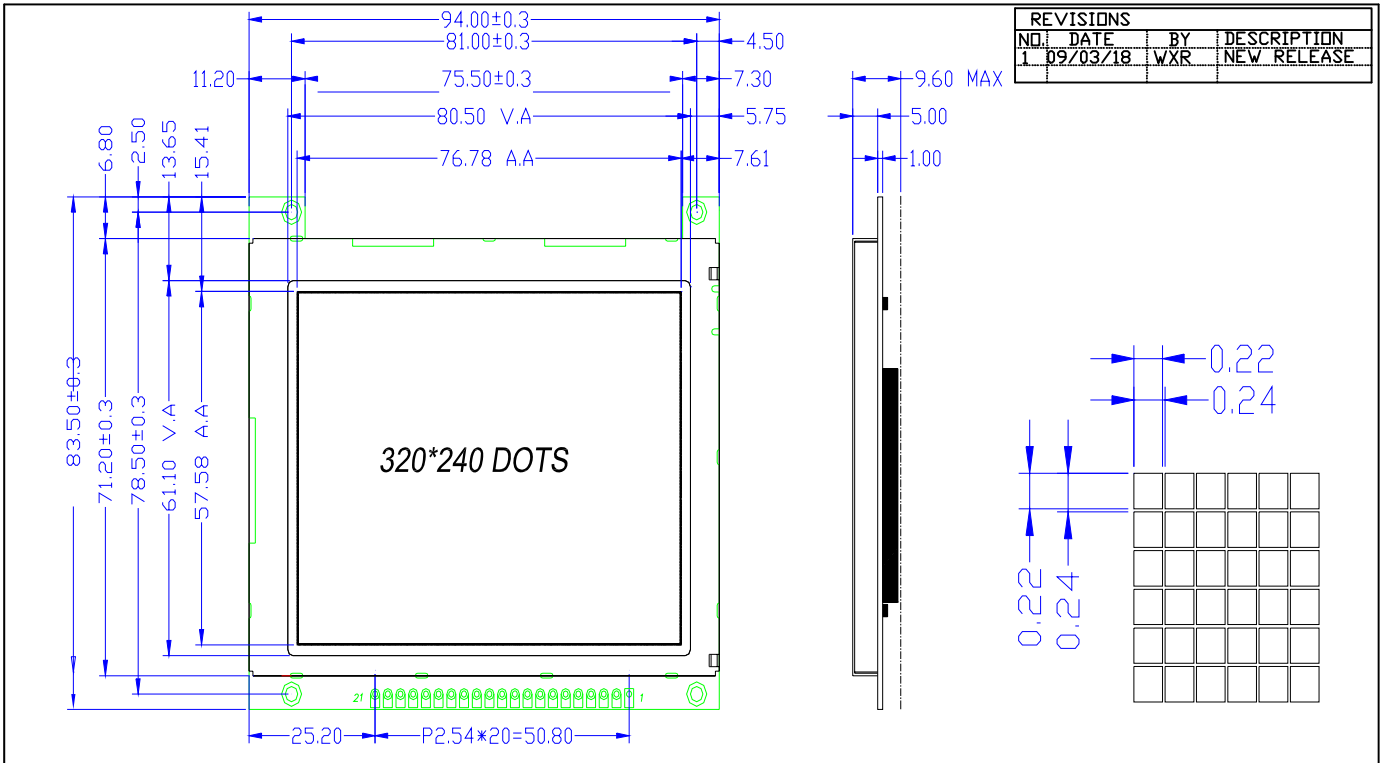


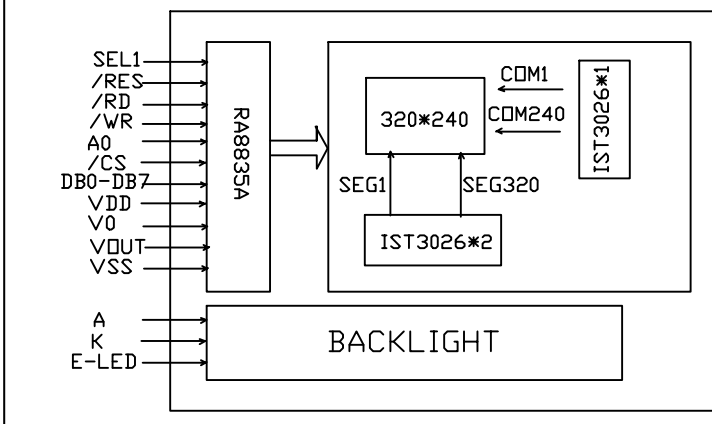
CUSTOMER'S APPROVED:

DATE:



REVISIONS			
NO.	DATE	BY	DESCRIPTION
1	09/03/18	WXR	NEW RELEASE

Block Diagram



Feature

1. BUILT IN CONTROLLER: RA8835A
2. POWER SUPPLY: 5.0V
3. LCD TYPE: FSTN, TRANSFLECTIVE
4. BACKLIGHT: LED SIDE BACKLIGHT
5. COLOUR OF BACKLIGHT: WHITE
6. 1/240 DUTY CYCLE, 1/17 BIAS
7. VIEWING ANGLE: 6 O'CLOCK
8. TEMP RANGE: Top: -20--70C; Tst: -30--80C
9. LOW CONSUMPTION, LOW VOLTAGE, HIGH CONTRAST

Mechanical Data

ITEM	SPECIFICATION	UNIT
OVERALL SIZE	94.0W x 83.5H x 9.6T	MM
VIEWING AREA	80.5W x 61.1H	MM
DOT NUMBER	320 x 240	DOTS
DOT SIZE	0.22W x 0.22H	MM
DOT PITCH	0.24W x 0.24H	MM

Pin Assignment

NO.	SYMBOL	DESCRIPTION
1	SEL1*1	8080 OR 6800 FAMILY INTERFACE SELECT
2	/RES	RESET SIGNAL
3	/RD	READ SIGNAL/ENABLE CLOCK(E)
4	/WR	WRITE SIGNAL/ R/W SIGNAL
5	A0	CONJUNCTION /RD AND /WR OR R/W AND E SIGNALS
6	/CS	CHIP SELECT
7-14	DB0-DB7	DATA BUS
15	VDD	POWER SUPPLY FOR LOGIC(5.0V)
16	V0	CONTRAST CONTROL
17	VEE	DRIVER VOLTAGE FOR LCD
18	VSS	GROUND PIN, CONNECTED TO 0V
19	K	LED BACKLIGHT POWER SUPPLY(0V)
20	A	LED BACKLIGHT POWER SUPPLY(+5.0V)
21	E-LED	BACKLIGHT ENABLE

Absolute Maximum Rating

ITEM	SYMBOL	MIN	MAX	UNIT
POWER SUPPLY(LOGIC)	VDD	0.3	7.0	V
POWER SUPPLY(LCD DRV.)	Vlcd	0.3	40.0	V
INPUT VOLTAGE	VI	-0.3	VDD+0.3	V

Electrical Characteristics

ITEM	SYMBOL	MIN	TYP	MAX	UNIT
VOLTAGE FOR LOGIC	VDD-VSS	4.75	5.0	5.25	V
SUPPLY CURRENT	IDD	-	3.0	5.0	mA
LCD OPERATING VOLTAGE	VDD-V0	0C	22.3	-	V
		25C	21.5	-	V
		40C	20.5	-	V
INPUT VOLTAGE	H	VIH	0.8VDD	VDD	V
	L	VIL	VSS	0.2VDD	V

DESCRIPTION: C/D Distar Technology Limited

GENERAL TOL: ±0.2 www.distarltd.com Drw WXR

DO NOT SCALE THIS DRAWING. Unit:mm

Chk
Apv

DS-G320240H-FFSSWE-YAA